

St. James's Place SW1





A beautifully presented three bedroom apartment in the heart of St James's with unprecedented west facing views overlooking Green Park



This spectacular duplex apartment offers wonderful entertaining space, with floor to ceiling windows framing leafy views of Green Park. The newly refurbished property is in one of St. James's most sought-after buildings. Situated on the ground and first floor, this spacious apartment offers an open plan reception and kitchen that gives direct access to the generous communal garden. The accommodation comprises an opulent principal en suite bedroom and two further double en suite bedrooms, all complemented by vast amounts of natural light. The building further benefits from a porter and underground car parking.



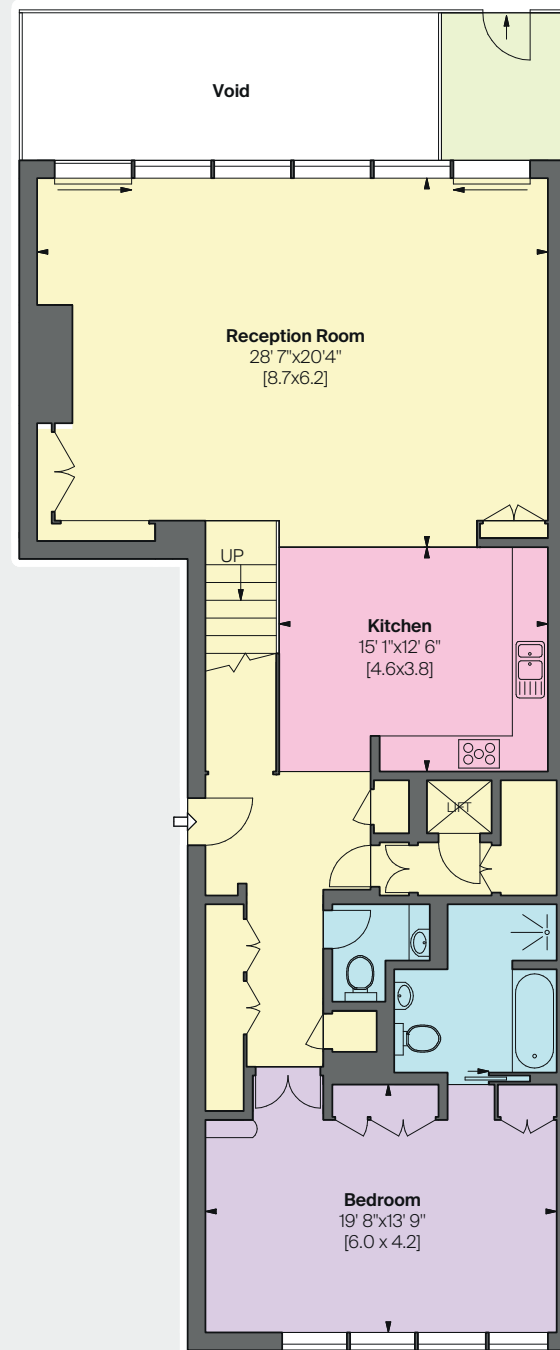
Situated in the heart of London's oldest district, St. James's Place is located just moments from the open spaces of Green Park and bustling Piccadilly. It is close to the museums, art galleries and theatres of the West End, alongside the Michelin starred restaurants of Mayfair and the luxury shopping on Bond Street. Approximately 0.1 miles from Green Park tube station (Piccadilly, Jubilee and Victoria lines).

Tenure Share of Freehold

Guide Price £10,000,000

Local Authority City of Westminster

EPC E



Ground Floor

Leading to
Communal
Gardens



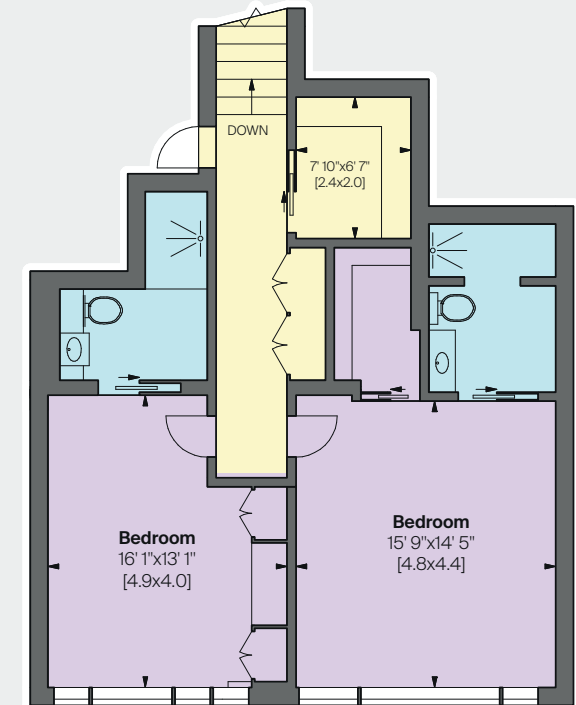
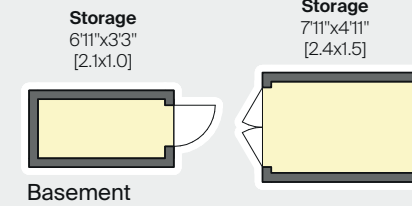
**Approximate Gross
Internal Area**

2,196 sq ft

204 sq m

excluding storage
65 sq ft / 6 sq m

This plan is for guidance only
and must not be relied upon as a
statement of fact. Attention is drawn
to the Important Notice on the last
page of the text of the Particulars.



First Floor



Knight Frank Mayfair
020 7647 6605
simon.burgoyne@knightfrank.com
[knightfrank.co.uk](https://www.knightfrank.co.uk)



Clifton Property Partners
020 7409 5087
rob@cliftonpp.com
[cliftonpp.com](https://www.cliftonpp.com)

Fixtures and fittings: A list of the fitted carpets, curtains, light fittings and other items fixed to the property which are included in the sale (or may be available by separate negotiation) will be provided by the Seller's Solicitors.

Important Notice: 1. Particulars: These particulars are not an offer or contract, nor part of one. You should not rely on statements by Knight Frank LLP in the particulars or by word of mouth or in writing ("information") as being factually accurate about the property, its condition or its value. Neither Knight Frank LLP nor any joint agent has any authority to make any representations about the property, and accordingly any information given is entirely without responsibility on the part of the agents, seller(s) or lessor(s). 2. Photos, Videos etc: The photographs, property videos and virtual viewings etc. show only certain parts of the property as they appeared at the time they were taken. Areas, measurements and distances given are approximate only. 3. Regulations etc: Any reference to alterations to, or use of, any part of the property does not mean that any necessary planning, building regulations or other consent has been obtained. A buyer or lessee must find out by inspection or in other ways that these matters have been properly dealt with and that all information is correct. 4. VAT: The VAT position relating to the property may change without notice. 5. To find out how we process Personal Data, please refer to our Group Privacy Statement and other notices at <https://www.knightfrank.com/legals/privacy-statement>.

Particulars dated 06/05/22. Photographs and videos dated 15/06/20.

Knight Frank is the trading name of Knight Frank LLP. Knight Frank LLP is a limited liability partnership registered in England and Wales with registered number OC305934. Our registered office is at 55 Baker Street, London W1U 8AN where you may look at a list of members' names. If we use the term 'partner' when referring to one of our representatives, that person will either be a member, employee, worker or consultant of Knight Frank LLP and not a partner in a partnership. If you do not want us to contact you further about our services then please contact us by either calling 020 3544 0692, email to marketing.help@knightfrank.com or post to our UK Residential Marketing Manager at our registered office (above) providing your name and address. KF-200728C-06GG