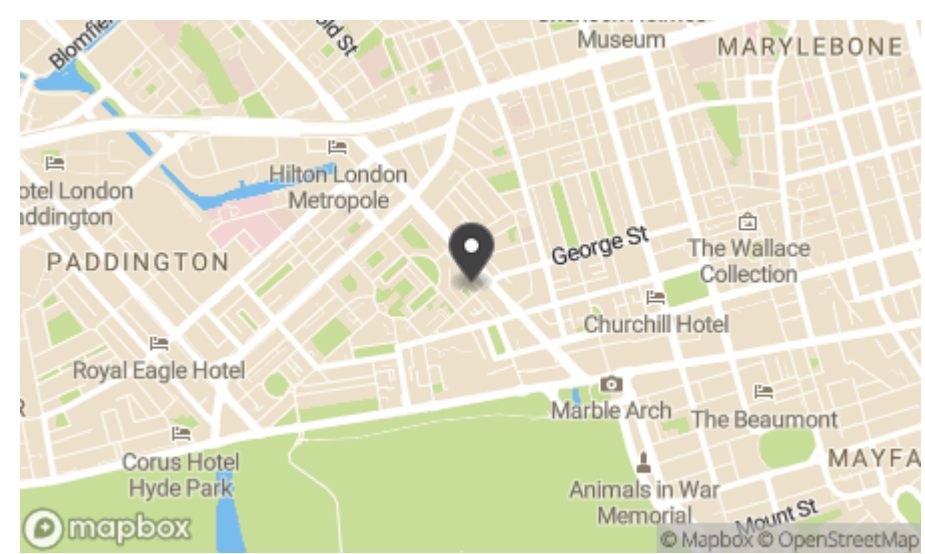




Park West, London

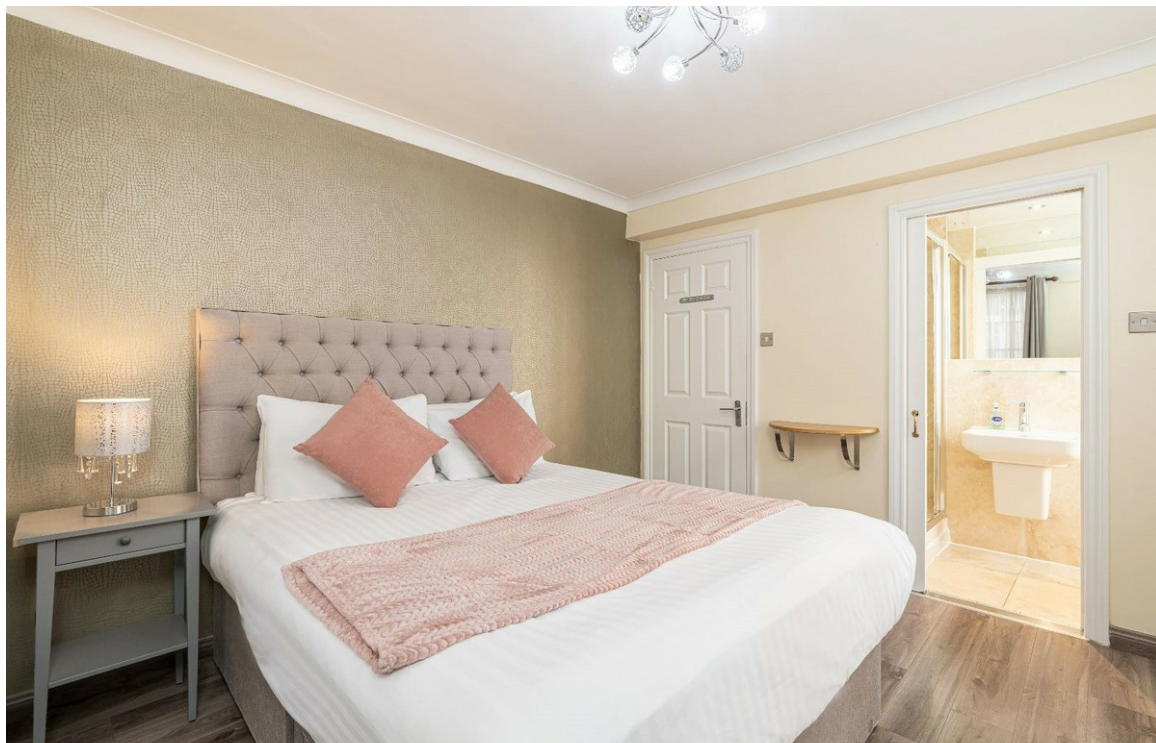
Asking Price £950,000

A modern fourth floor lateral apartment of 914 square feet offering four bedrooms, set within a popular portered building with a lift.



Park West is a popular residential address close to numerous local shops and amenities found on and around the Edgware Road, within close proximity to the wide-open spaces of Hyde Park and ideally positioned to enjoy all the West End has to offer.





Situated on the fourth floor of a period building with a lift and a 24-hour porter. Presented in immaculate condition, the apartment boasts good ceiling height throughout and offers an abundance of natural light. The apartment is extremely well arranged with a charming entrance hall leading to all the principal rooms.

Offering contemporary living with four large double bedrooms with two benefiting from en suite bathrooms. A sizeable open plan Reception/Kitchen is bright owing to its South facing position in the building, allowing for good entertaining of guests and family.



Park West, W1

Gross Internal Area (approx)

85 Sq m (914 sq ft)

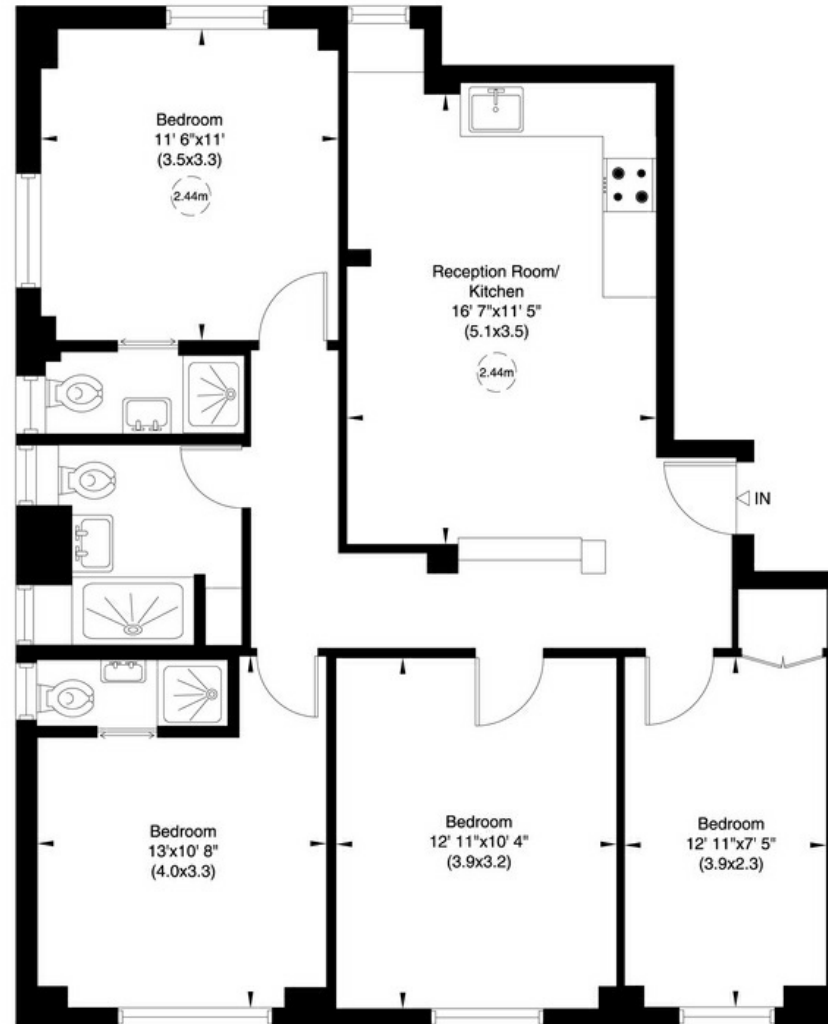
Accommodation

- *Entrance Hall
- *Kitchen/Reception Room
- *Four Double Bedrooms (two with en-suite)
- *Family Bathroom
- *Lift
- *Porter
- *EPC Rating - C

Tenure - leasehold expiring October 2104

Service Charge - £8,000 per annum

Ground Rent - £200 per annum



IMPORTANT NOTICE: Clifton Property Partners, their clients and any joint agents give notice that: 1: They are not authorised to make or give any representations or warranties in relation to the property either here or elsewhere, either on their own behalf or on behalf of their client or otherwise. They assume no responsibility for any statement that may be made in these particulars. These particulars do not form part of