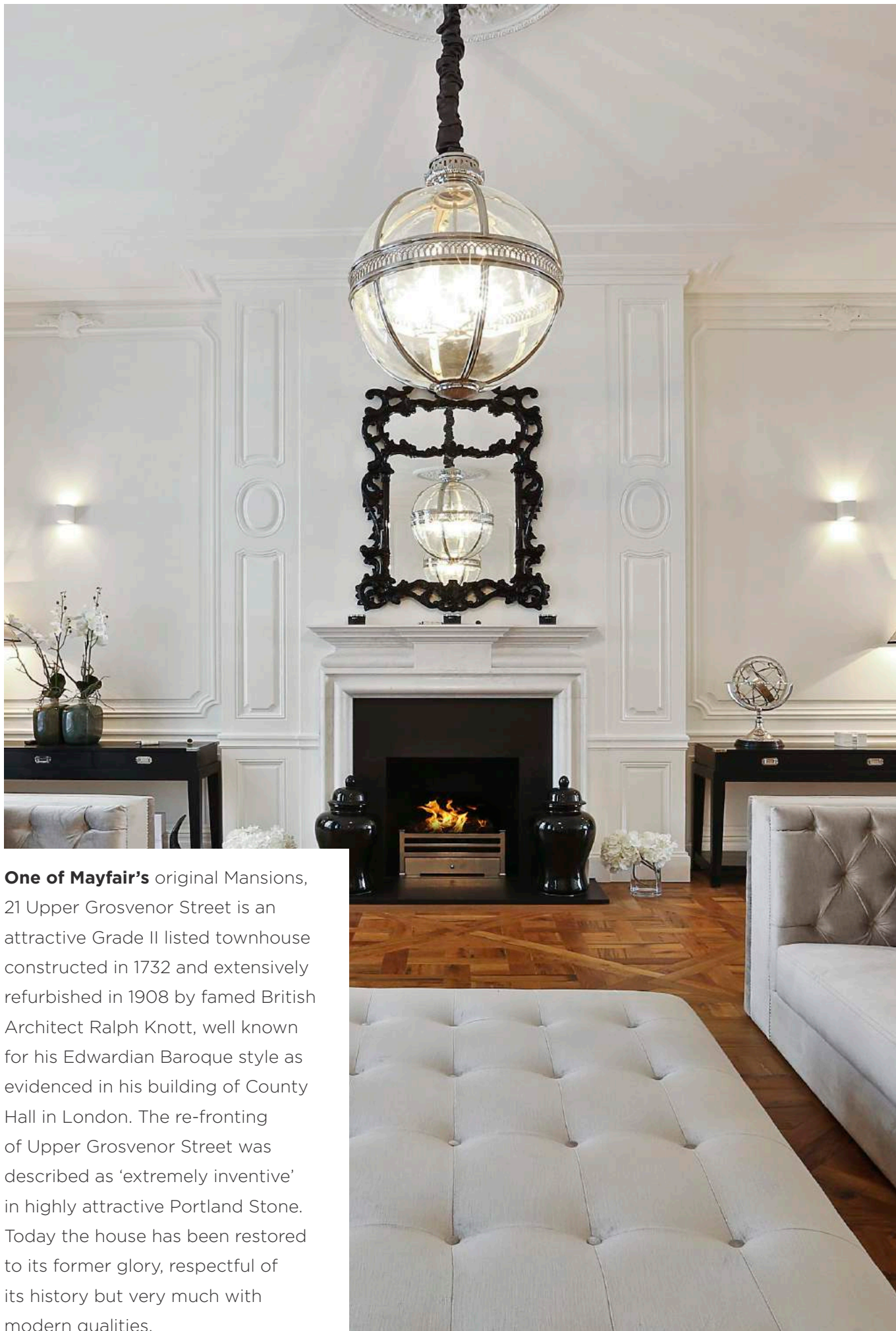




UPPER GROSVENOR STREET
MAYFAIR, W1

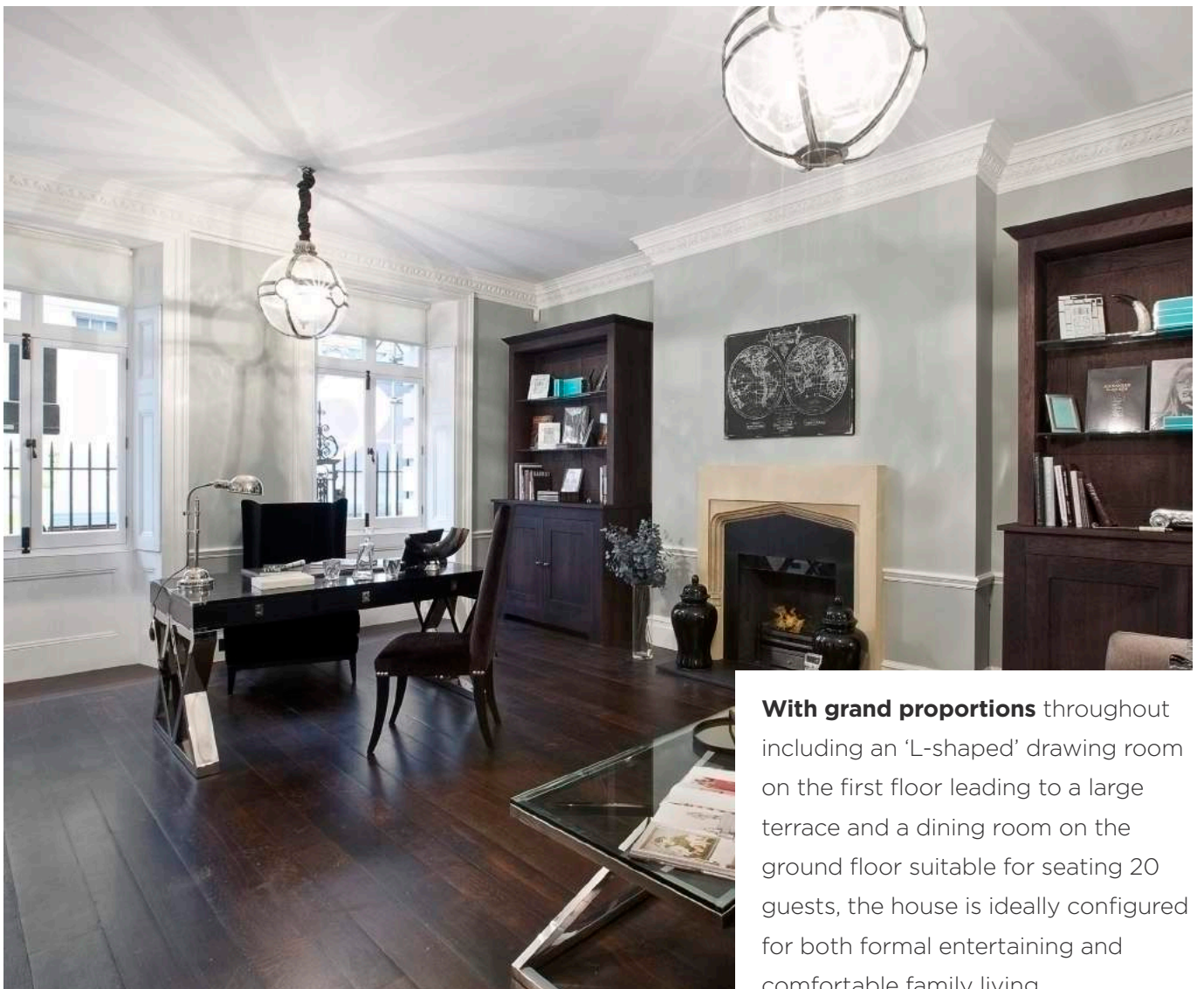




One of Mayfair's original Mansions, 21 Upper Grosvenor Street is an attractive Grade II listed townhouse constructed in 1732 and extensively refurbished in 1908 by famed British Architect Ralph Knott, well known for his Edwardian Baroque style as evidenced in his building of County Hall in London. The re-fronting of Upper Grosvenor Street was described as 'extremely inventive' in highly attractive Portland Stone. Today the house has been restored to its former glory, respectful of its history but very much with modern qualities.



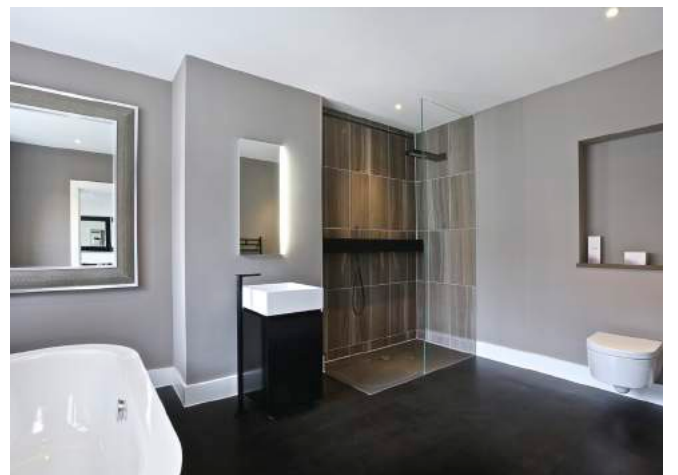


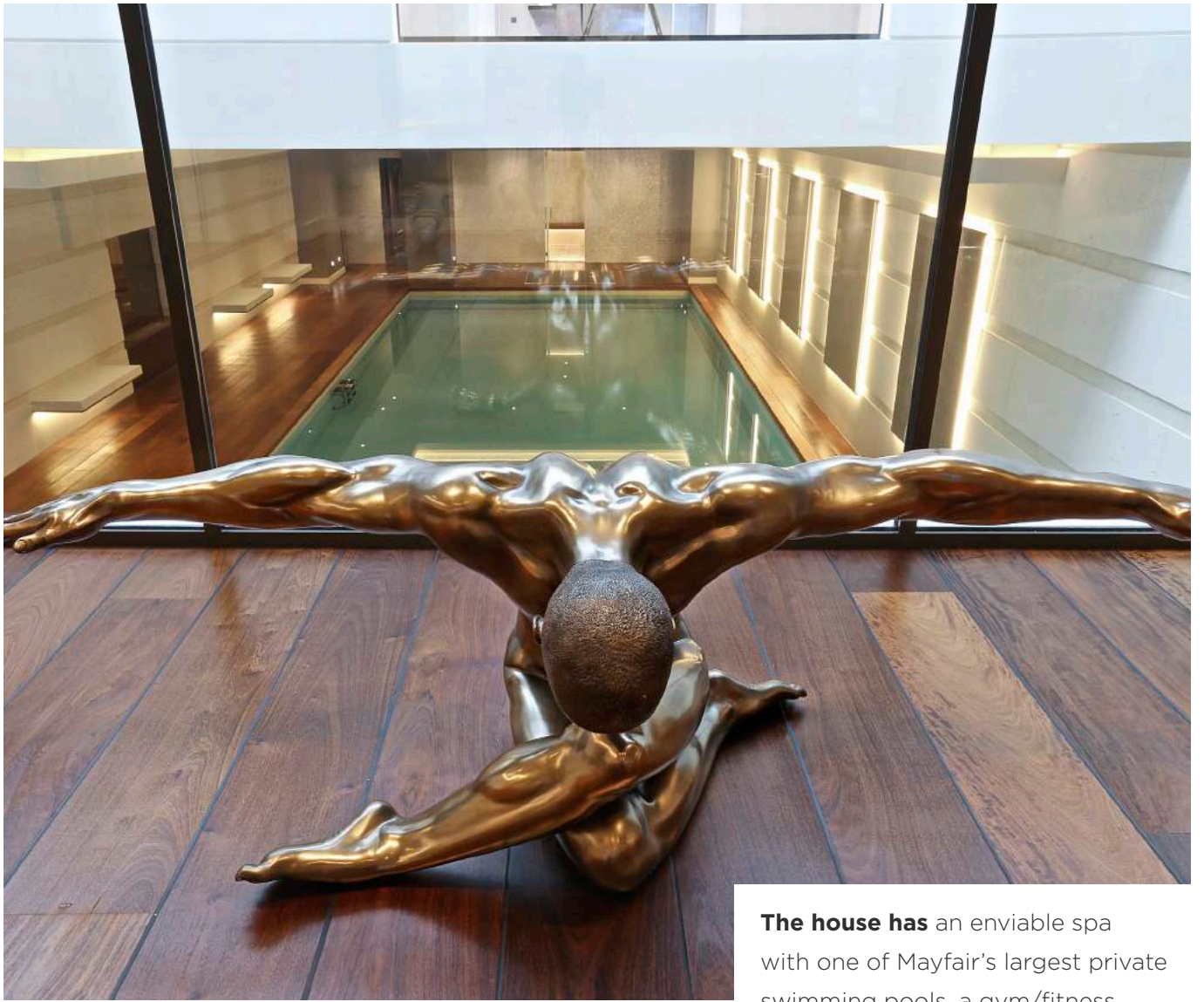


With grand proportions throughout including an 'L-shaped' drawing room on the first floor leading to a large terrace and a dining room on the ground floor suitable for seating 20 guests, the house is ideally configured for both formal entertaining and comfortable family living.

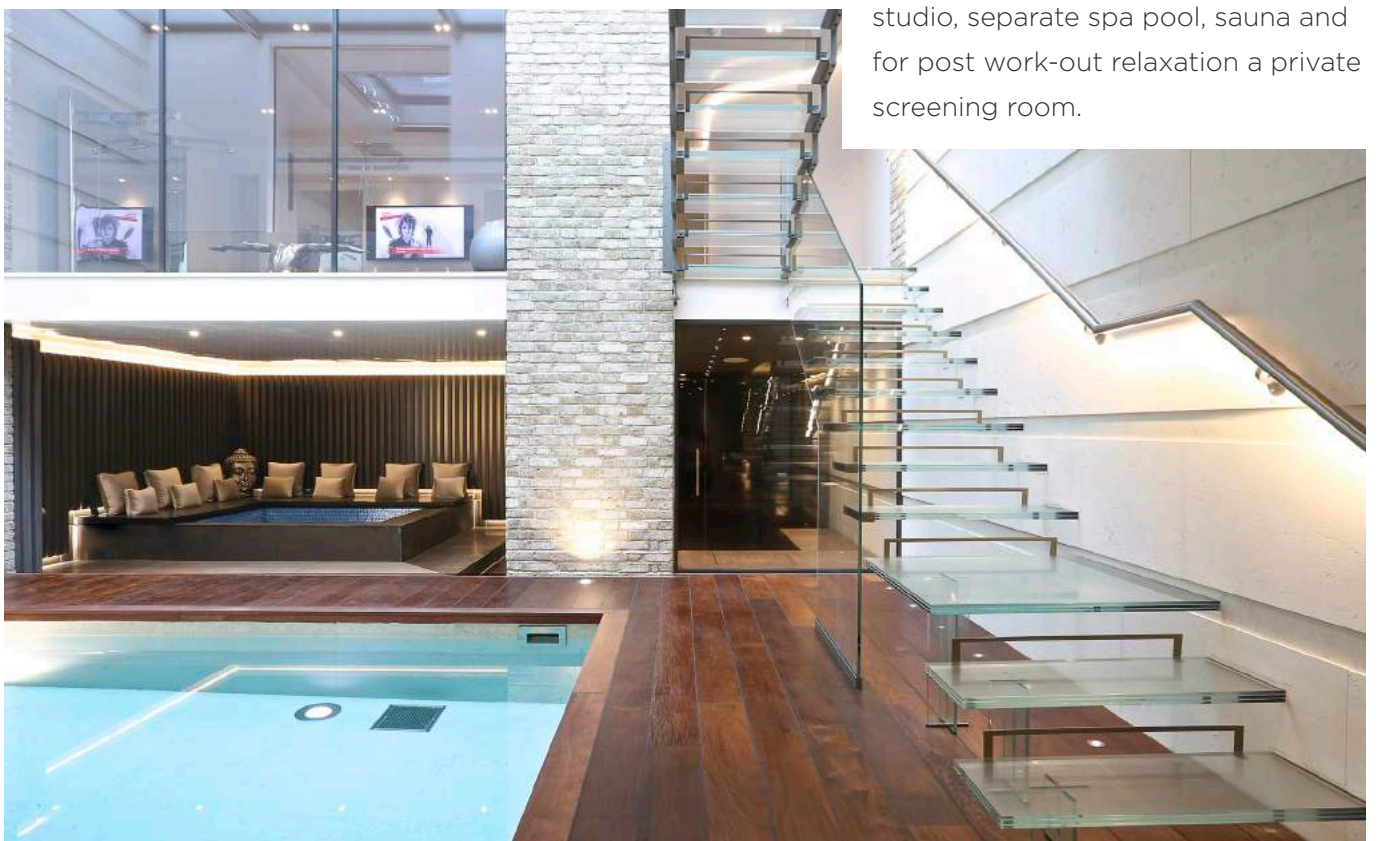


The centrepiece of the house is the family kitchen, unusually positioned on the ground floor (supported by a 'dirty kitchen' on the lower ground floor), where families can meet and congregate. As well as the formal rooms, the main house has a 5 principle bedroom suites including the master bedroom which occupies the entire second floor and has its own private and secluded roof terrace. Further bedrooms are found in the generously proportioned 'Mews House' at the rear in Culross Street which has its own drawing room/kitchen as well as a well-appointed gym and garaged parking for 2 cars.





The house has an enviable spa with one of Mayfair's largest private swimming pools, a gym/fitness studio, separate spa pool, sauna and for post work-out relaxation a private screening room.





Upper Grosvenor Street, Mayfair, W1

Approximate Gross Internal Area = 14,510 sq ft / 1,348 sq m



ACCOMMODATION

Main House

- Grand entrance hall
- Study
- Formal Dining Room
- Family Kitchen
- L-shaped drawing room
- 56 ft roof terrace
- Master Bedroom Suite with private roof terrace
- 4 guest bedroom suites
- Spa & wellness centre including swimming pool and gym
- Screening room
- Staff suite

Mews House

- Garage Parking for 2 cars
- Drawing room/kitchen
- Master bedroom suite
- 4 additional bedrooms
- Family bathroom

Price Upon Application

Tenure:
Freehold

This plan is for layout guidance only. Drawn in accordance with RICS guidelines. Not drawn to scale unless stated. Windows & door openings are approximate. Whilst every care is taken in the preparation of this plan, please check all dimensions, shapes & compass bearings before making any decisions reliant upon them.



020 7409 5087

Clifton Property Partners Ltd. is a Limited Company registered in England & Wales with registered number 11762690 and VAT registered number 316 234 038. Our registered head office is at 3 Hill Street, London, England, W1J 5LB. This message is intended solely for the named addressee and may contain confidential information. If you have received this message in error, please send it back to us, and immediately and permanently delete it; do not use, copy or disclose the information contained in this message or in any attachment. For information about how we process data and monitor communications please see our Privacy policy and for terms of use please see our Terms of use policy. Although reasonable precautions are taken to ensure this email and any attachments are free from viruses, we make no representation or warranty as to the absence of viruses. Recipients should therefore scan this email and attachments for viruses; we cannot be held responsible for any failure to do so. If this email contains reference to properties for sale, it remains subject to contract and non-binding at all times. Our views on price are not intended as a formal valuation and should not be relied upon as such by the recipient or any third party unless and to the extent specifically stated otherwise by us.



Mayfair:

020 7499 1012

IMPORTANT NOTICE: Knight Frank, their clients and any joint agents give notice that: 1: They are not authorised to make or give any representations or warranties in relation to the property either here or elsewhere, either on their own behalf or on behalf of their client or otherwise. They assume no responsibility for any statement that may be made in these particulars. These particulars do not form part of any offer or contract and must not be relied upon as statements or representations of fact. 2: Any areas, measurements or distances are approximate. The text, photographs and plans are for guidance only and are not necessarily comprehensive. It should not be assumed that the property has all necessary planning, building regulation or other consents and Knight Frank have not tested any services, equipment or facilities. Purchasers must satisfy themselves by inspection or otherwise.