

TOWNHOUSE 04

3 Bedroom

Townhouse Features

Lower Ground Floor	113.76 sq m	1,224 sq ft
Ground Floor	114.99 sq m	1,238 sq ft

Total	228.75 sq m	2,462 sq ft
--------------	--------------------	--------------------

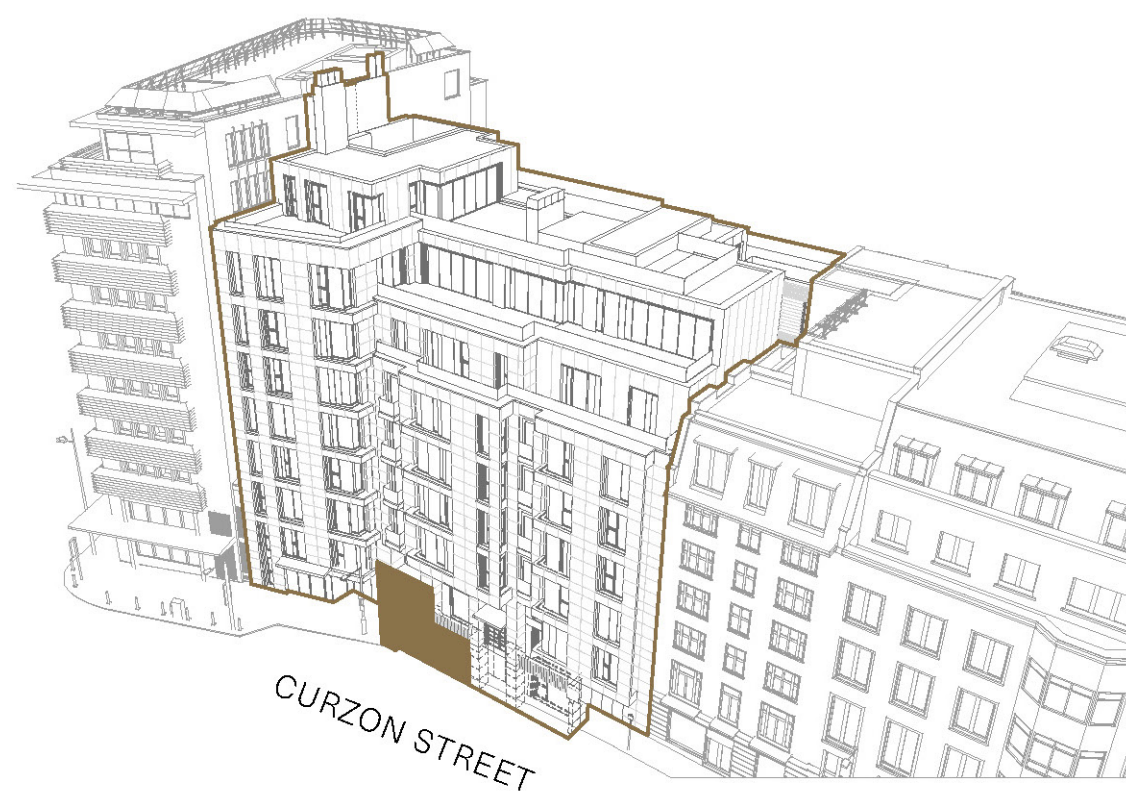
Lounge	6.27m x 6.42m	20'6" x 21'1"
Kitchen	4.48m x 4.00m	14'7" x 13'1"
Dining	3.45m x 3.67m	11'3" x 12'0"
Study	4.26m x 3.98m	13'10" x 13'1"
Master Bedroom	7.45m x 3.73m	24'4" x 12'2"
Bedroom 2	5.26m x 3.38m	17'3" x 11'1"
Bedroom 3	5.38m x 3.47m	17'7" x 11'4"
Terrace	1.50m x 10.56m	4'9" x 34'6"



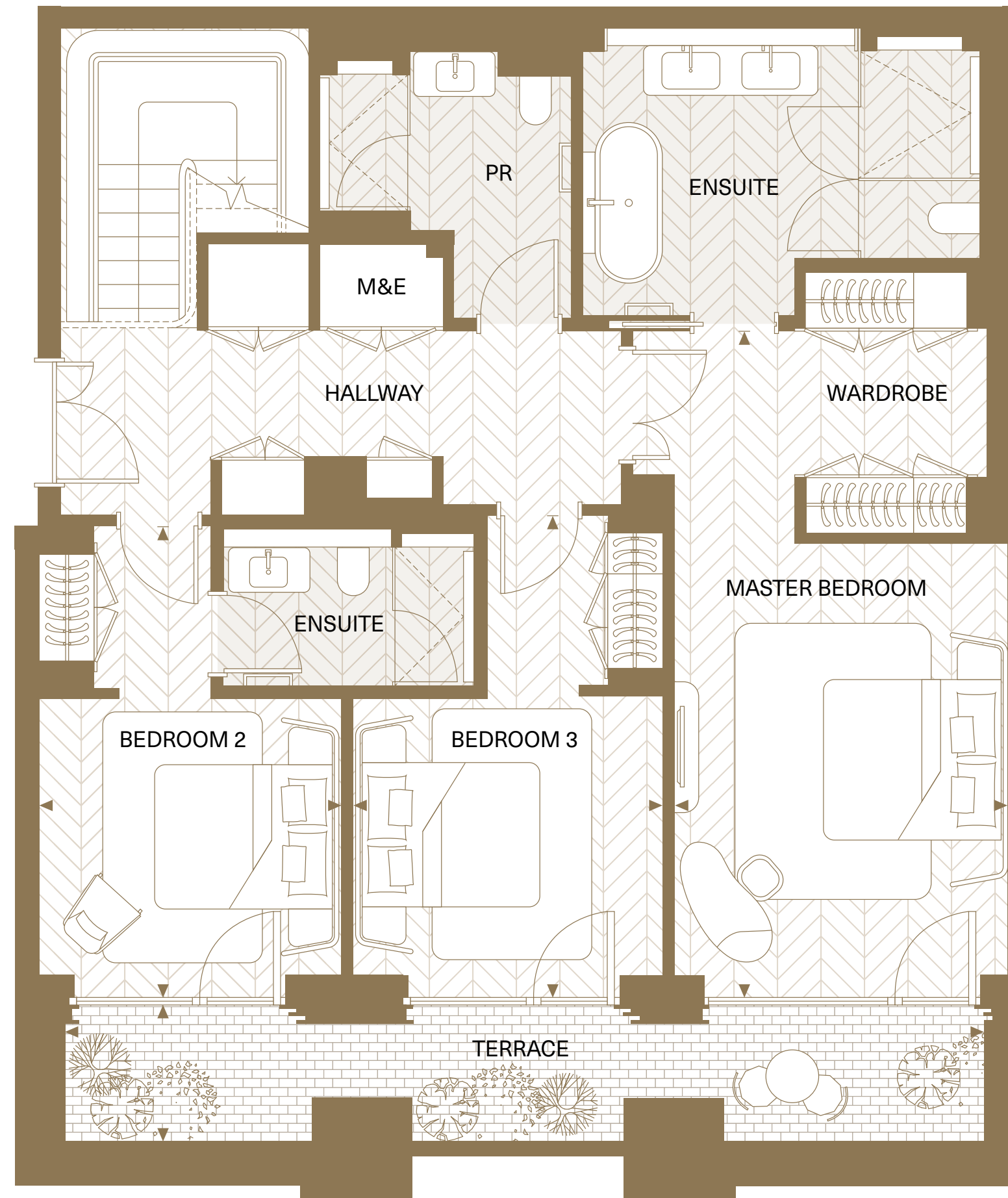
North

Lower Ground Floor

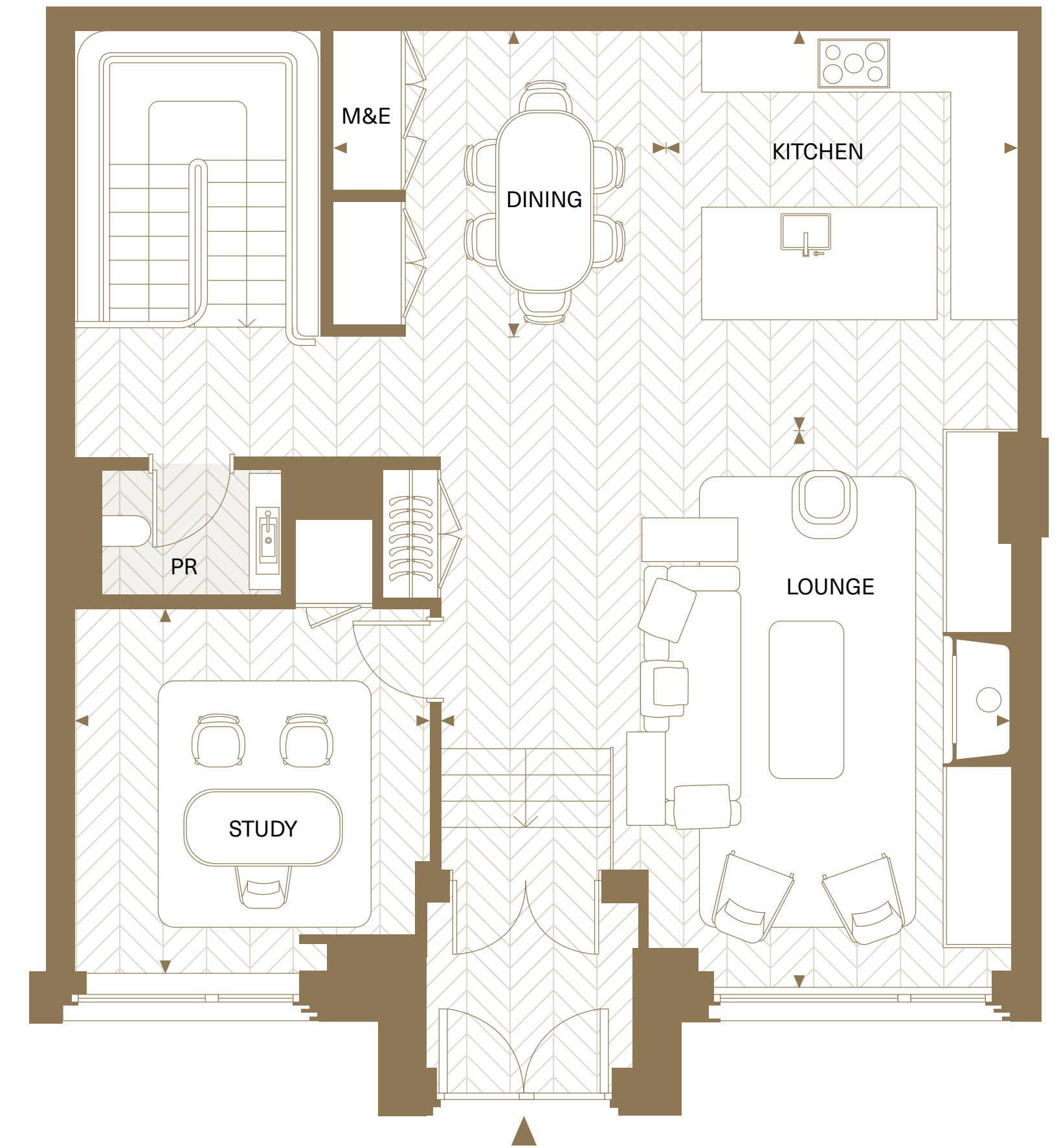
Ground Floor



Lower Ground Floor



Ground Floor



Key:

- Depicts measurement points
- M&E** Mechanical & Electric Cupboard
- PR** Powder Room
- Fireplace