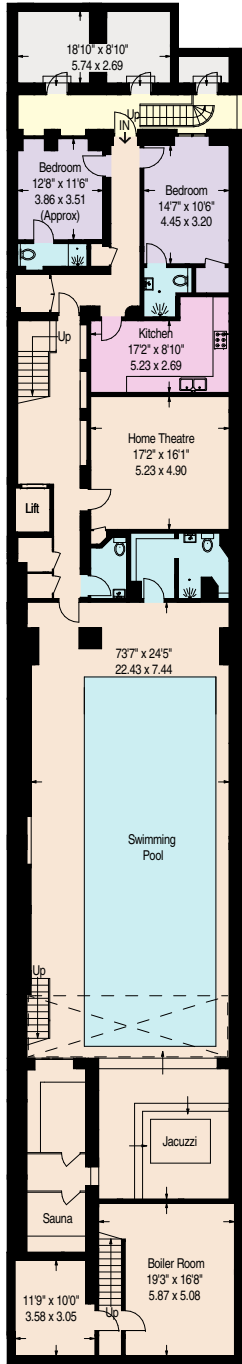
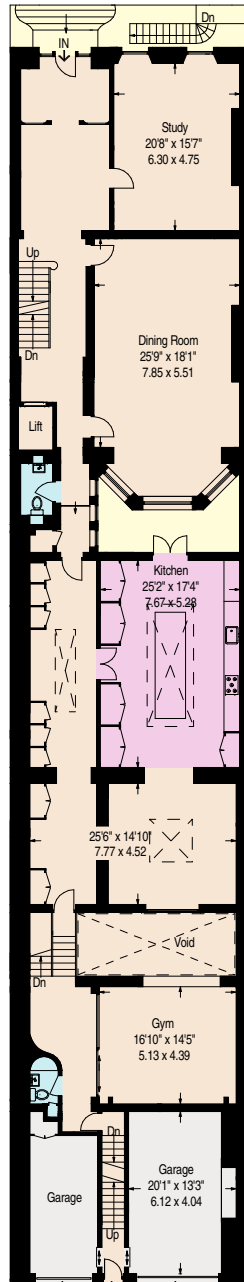


# Upper Grosvenor Street, W1K

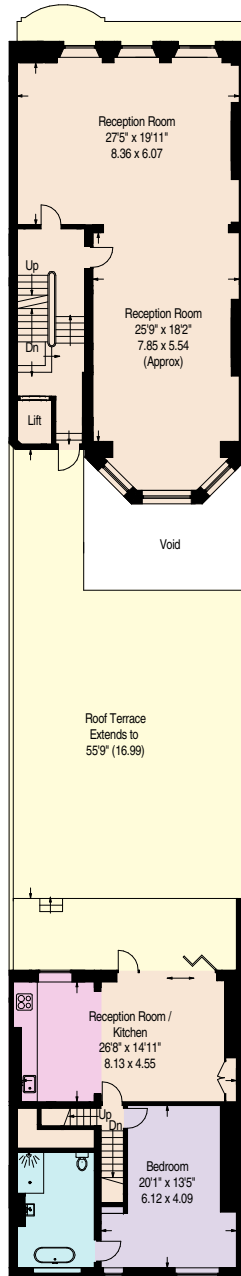
Approximate Gross Internal Area  
 (Including Lift / Garages / Swimming Pool / First Floor Half Landing / Basement / Excluding Reduced Headroom)  
 14510 sq ft / 1348 sq m  
 Reduced Headroom = 48 sq ft / 4.4 sq m  
 Outbuilding = 200 sq ft / 18.6 sq m  
 Total = 14758 sq ft / 1371 sq m



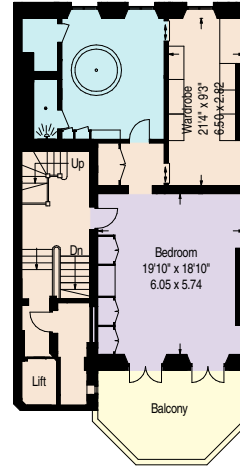
Basement



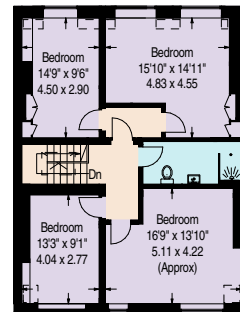
Ground Floor



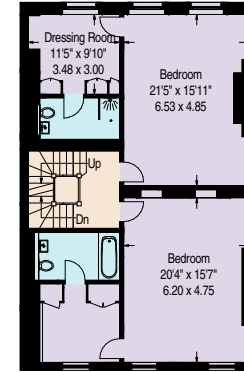
First Floor



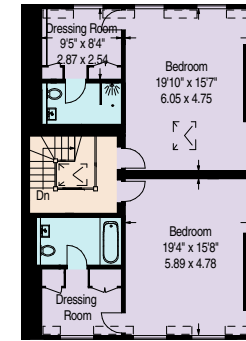
Second Floor



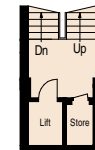
Second Floor



Third Floor



Fourth Floor



First Floor  
Half Landing

□ = Reduced headroom below 1.5 m / 5'

